

## Summary

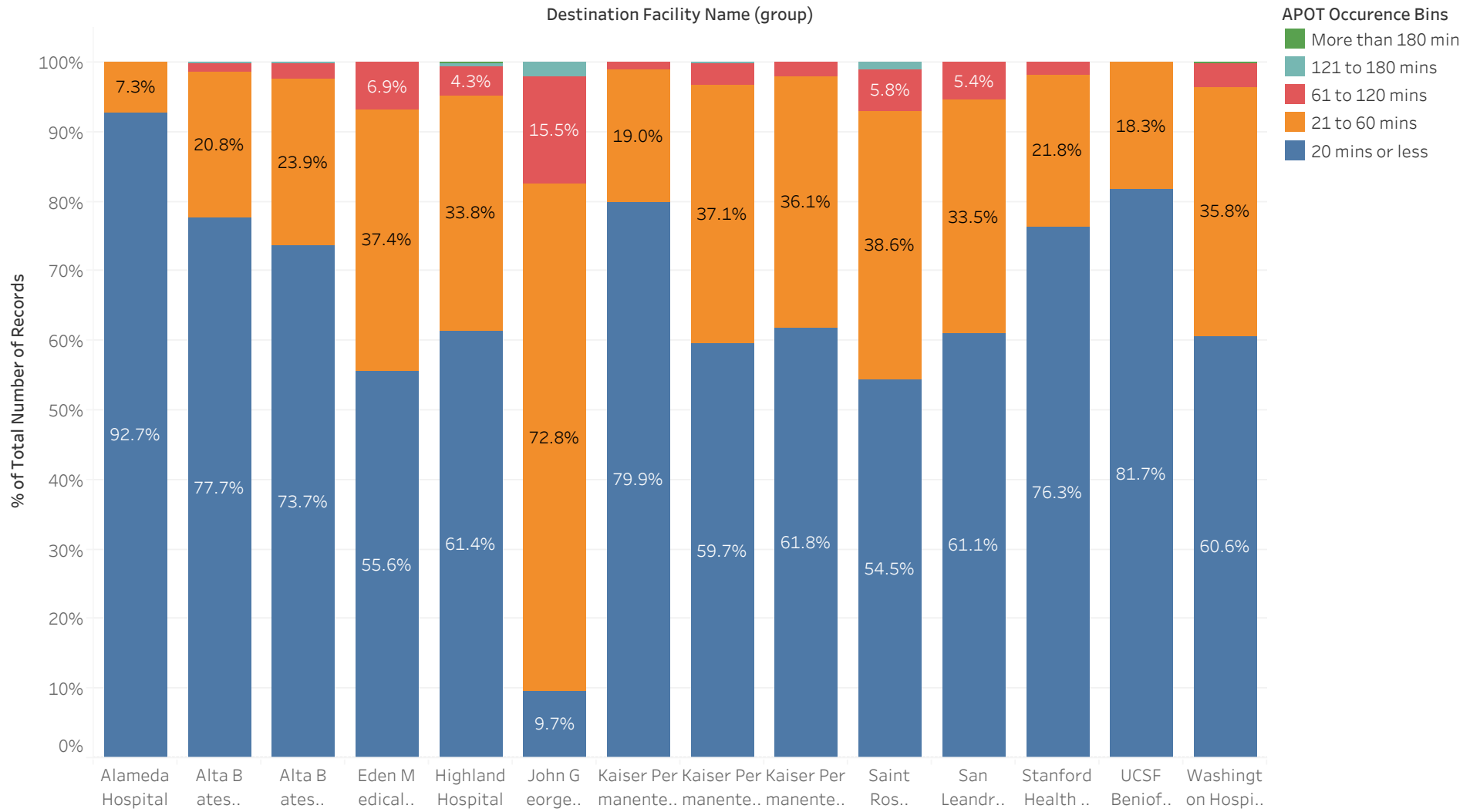
Destination Facility Name (group)	Avg. Transfer of Care	Percentile (90) of Transfer of ..	APOD>60m..	APOD % of N	
Alameda Hospital	10.6	18.1	0	0.0%	260
Alta Bates Summit Medic..	16.5	30.0	7	1.5%	462
Alta Bates Summit Medic..	17.4	32.0	28	2.4%	1,156
Eden Medical Center	24.0	49.0	58	6.9%	836
Highland Hospital	22.2	44.5	54	4.8%	1,116
John George Psychiatric P..	43.8	75.5	36	17.5%	206
Kaiser Permanente, Frem..	16.4	30.9	5	1.1%	462
Kaiser Permanente, Oakla..	21.4	40.0	21	3.2%	653
Kaiser Permanente, San L..	20.4	36.0	15	2.1%	726
Saint Rose Hospital	26.3	51.0	31	7.0%	446
San Leandro Hospital	22.3	43.3	26	5.4%	478
Stanford Health Care - Val..	17.2	31.7	12	1.9%	634
UCSF Benioff Children's H..	14.3	26.7	0	0.0%	104
Washington Hospital, Fre..	21.9	41.0	31	3.6%	861

# APOT Bins

## APOT Occurrence Bins

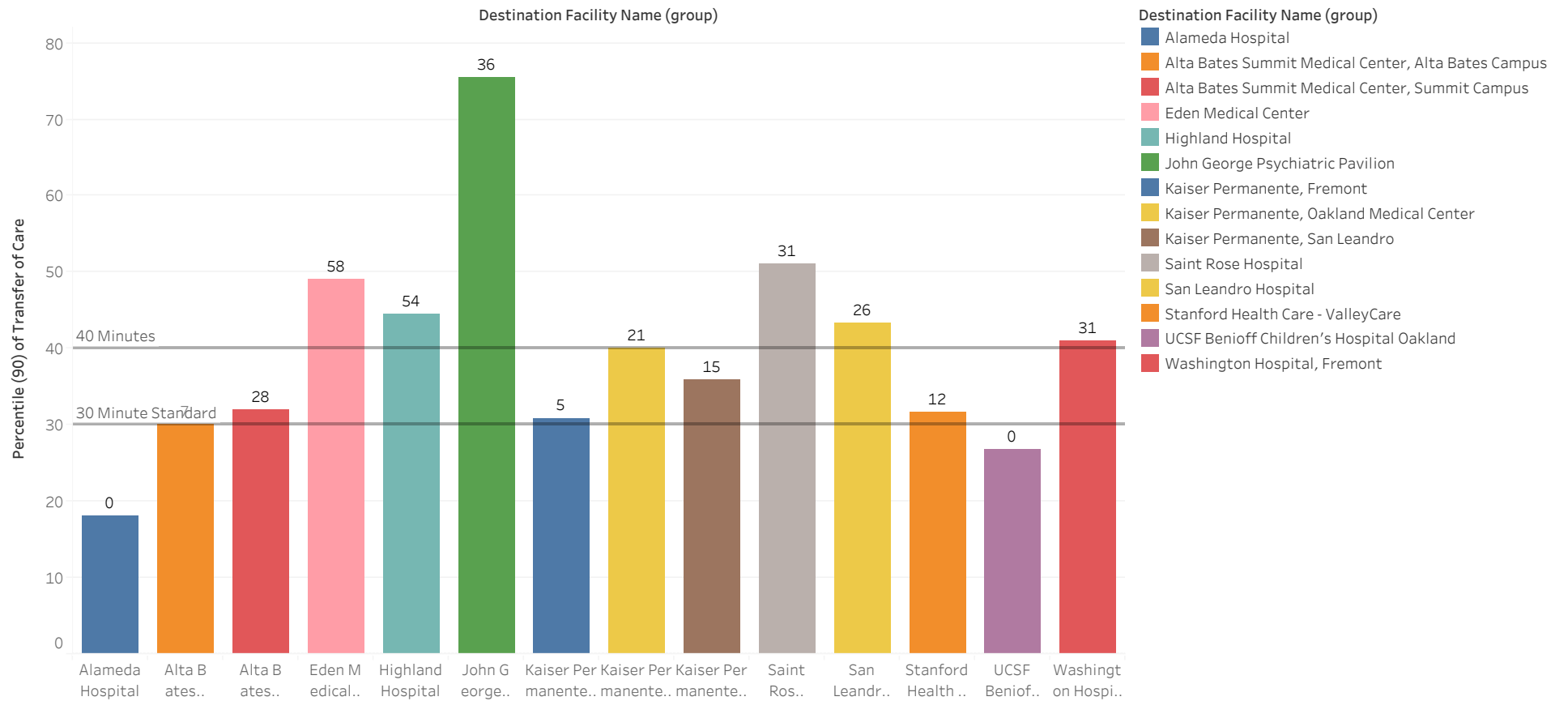
Destination Facility Name (group)	20 mins or less	21 to 60 mins	61 to 120 mins	121 to 180 mins	More than 18..	Grand Total
Alameda Hospital	241 92.69%	19 7.31%				260 100.00%
Alta Bates Summit Medical Center, Alta Bates Campus	359 77.71%	96 20.78%	6 1.30%	1 0.22%		462 100.00%
Alta Bates Summit Medical Center, Summit Campus	852 73.70%	276 23.88%	27 2.34%	1 0.09%		1,156 100.00%
Eden Medical Center	465 55.62%	313 37.44%	58 6.94%			836 100.00%
Highland Hospital	685 61.38%	377 33.78%	48 4.30%	5 0.45%	1 0.09%	1,116 100.00%
John George Psychiatric Pavilion	20 9.71%	150 72.82%	32 15.53%	4 1.94%		206 100.00%
Kaiser Permanente, Fremont	369 79.87%	88 19.05%	5 1.08%			462 100.00%
Kaiser Permanente, Oakland Medical Center	390 59.72%	242 37.06%	20 3.06%	1 0.15%		653 100.00%
Kaiser Permanente, San Leandro	449 61.85%	262 36.09%	15 2.07%			726 100.00%
Saint Rose Hospital	243 54.48%	172 38.57%	26 5.83%	5 1.12%		446 100.00%
San Leandro Hospital	292 61.09%	160 33.47%	26 5.44%			478 100.00%
Stanford Health Care - ValleyCare	484 76.34%	138 21.77%	12 1.89%			634 100.00%
UCSF Benioff Children's Hospital Oakland	85 81.73%	19 18.27%				104 100.00%
Washington Hospital, Fremont	522 60.63%	308 35.77%	29 3.37%	1 0.12%	1 0.12%	861 100.00%
<b>Grand Total</b>	<b>5,456 64.95%</b>	<b>2,620 31.19%</b>	<b>304 3.62%</b>	<b>18 0.21%</b>	<b>2 0.02%</b>	<b>8,400 100.00%</b>

# APOT Bins Graph

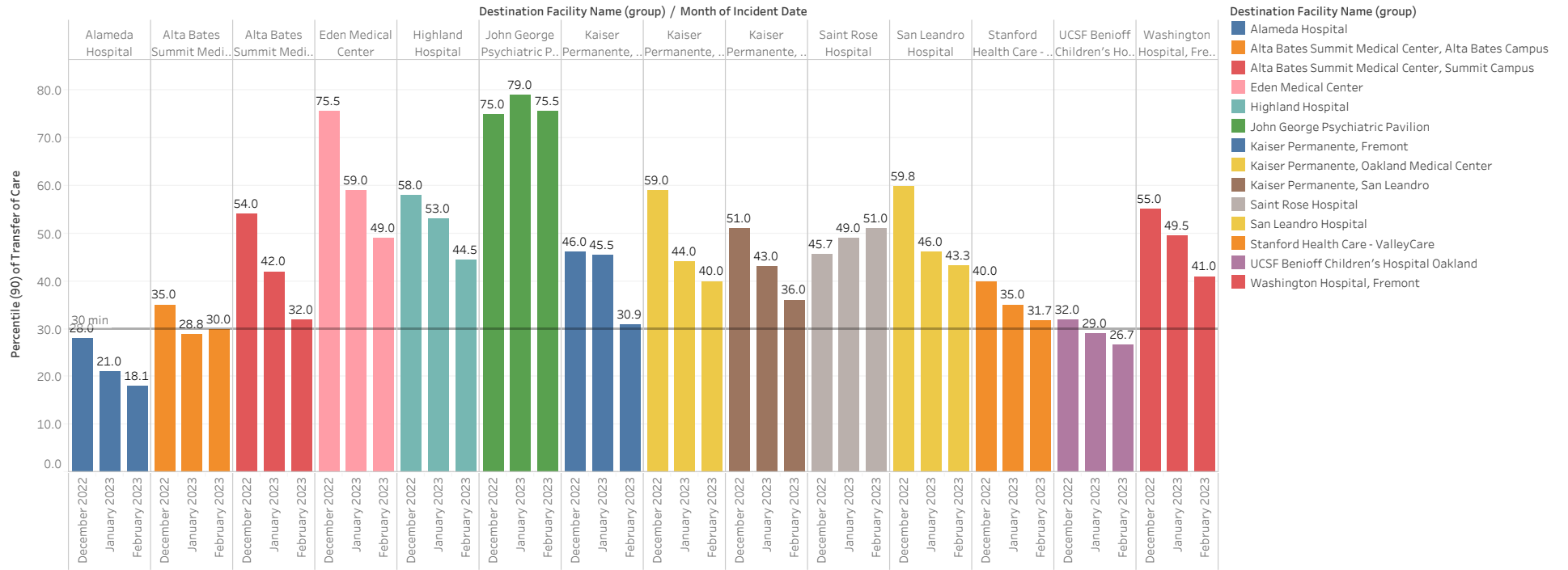


# Current Month 90% APOT

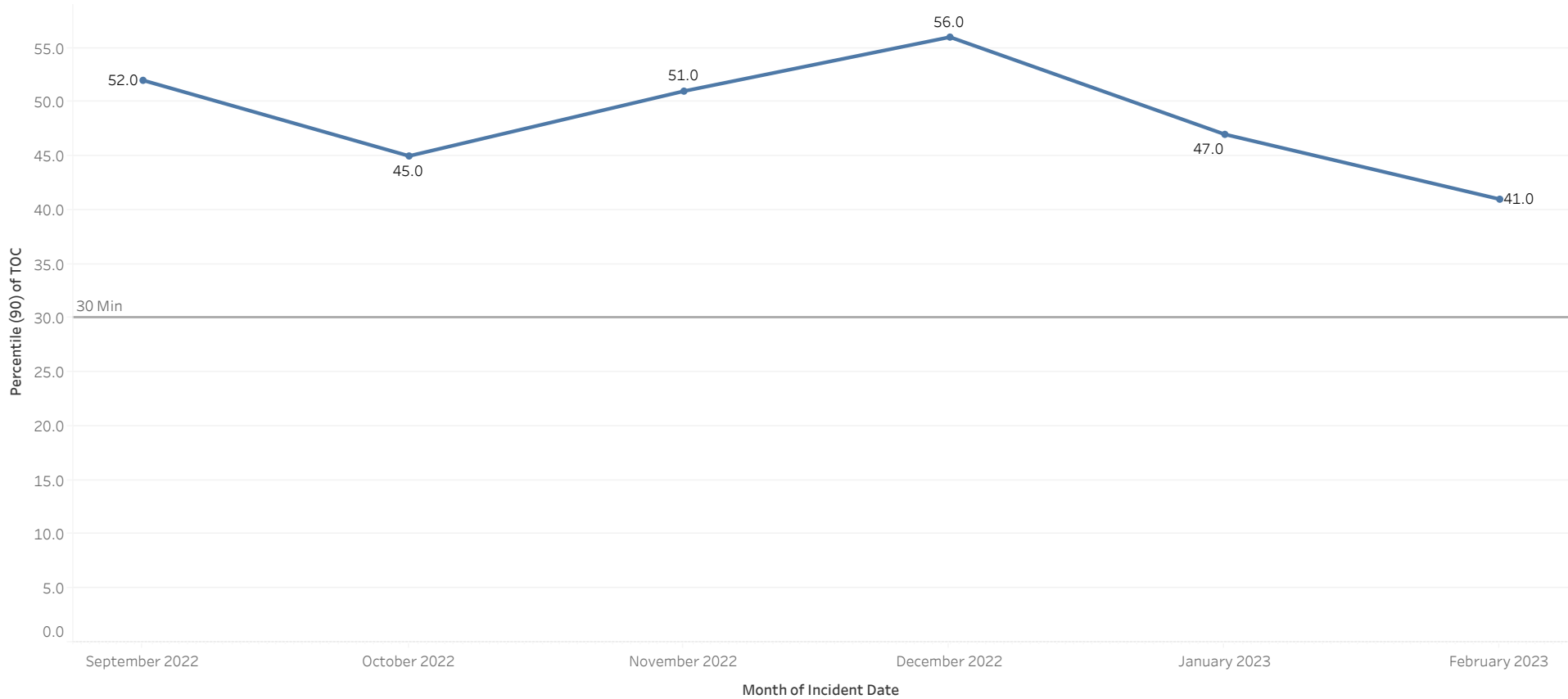
Data label reflects number of APOD >60min



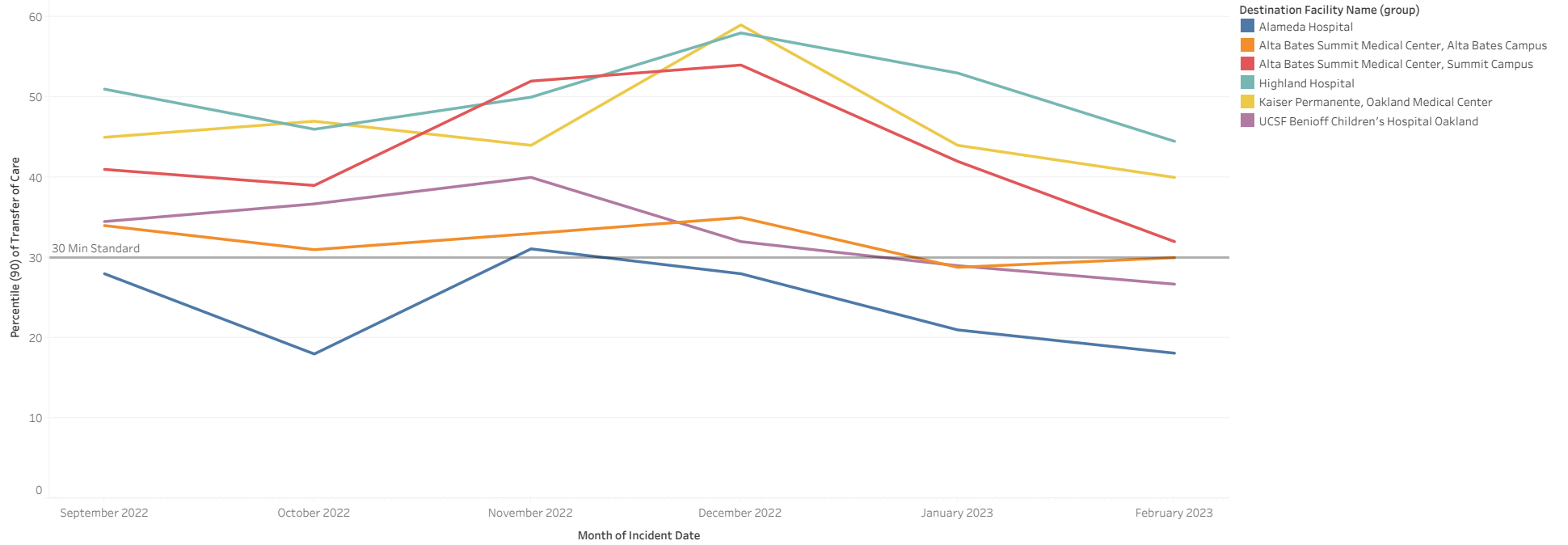
Prev Month 90% APOT



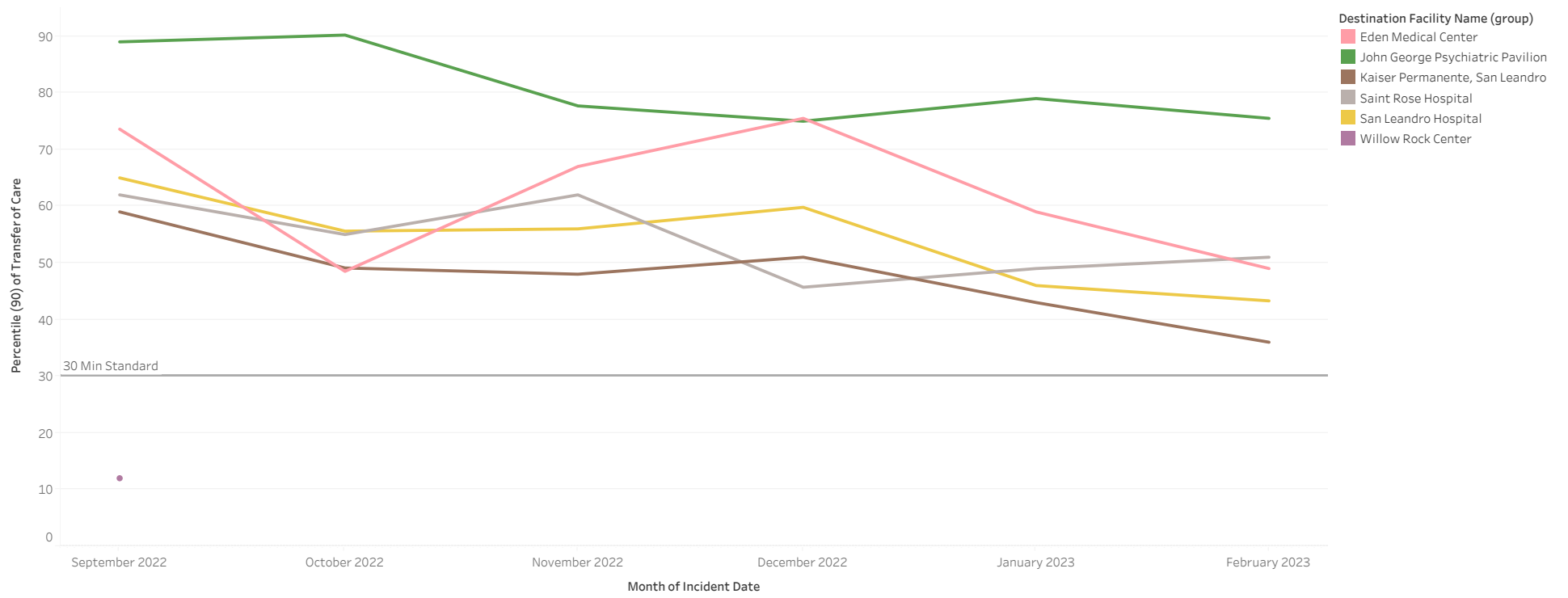
# All Hospital 90% APOT



# North 90% APOT

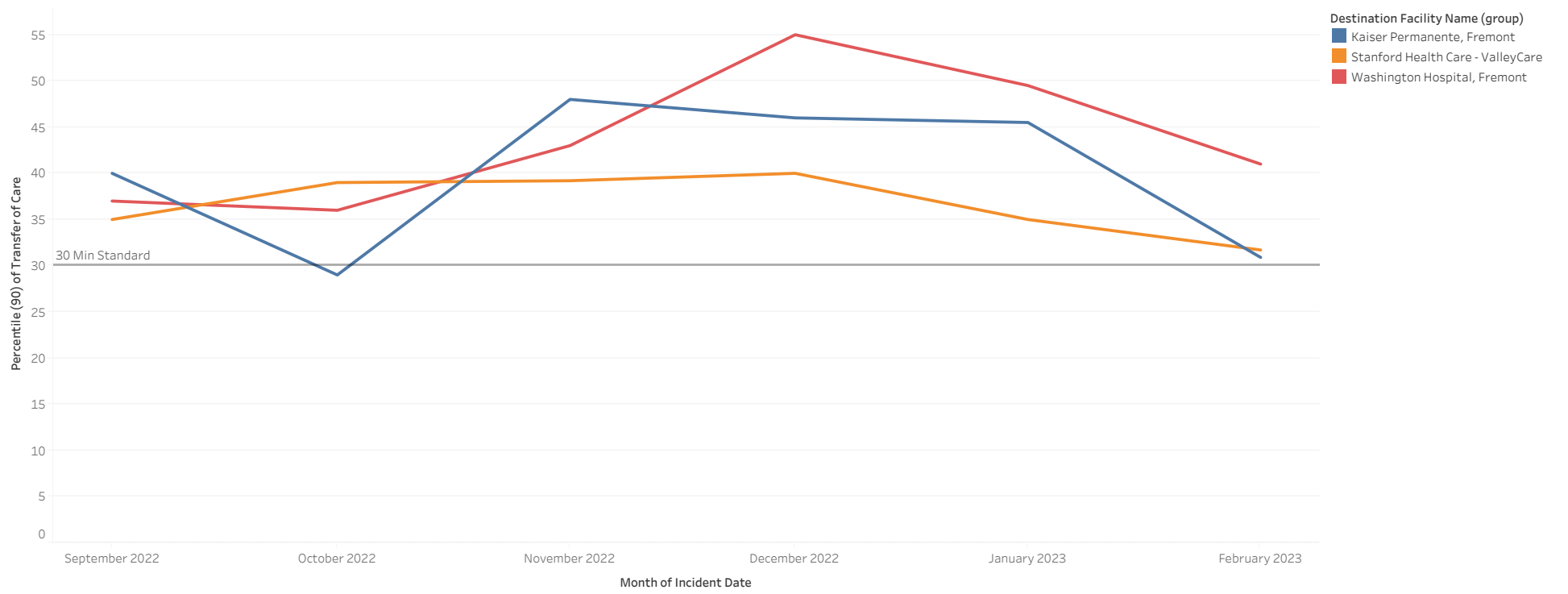


# Mid 90% APOT





# South and East 90% APOT



# APOT Bins Graph by Agency

